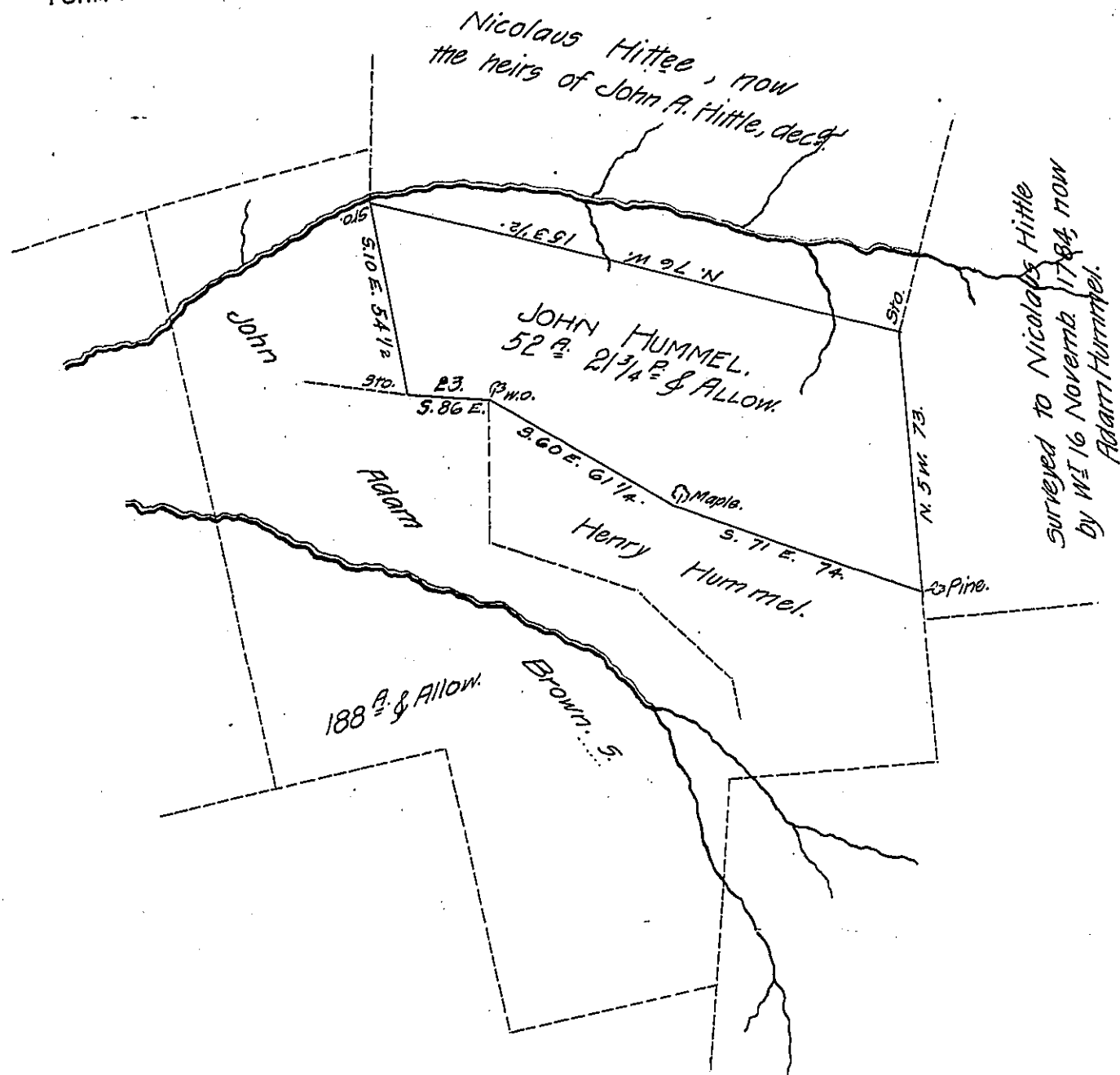


FORM NO 1.



Situate in Pinegrove Township, Schuylkill County, Containing 52^A 2³/₄^P & allowance of six per cent for roads, &c., part of the same larger tract of 188^A & allowance of six per cent, which was surveyed to Jacob Mast[†] by Virtue of an Application, N^o 2307, dated the 2^d of February, A.D. 1767, entered by him, surveyed for John Hummel, June 20th, 1822.

By Jn. Dreher, D.S.

To Samuel Cochran, Esq.,
Surveyor Gen^l of Penn^a.

[†] Mort^h in the book.

IN TESTIMONY that the above is a copy of the original remaining on file in the Department of Internal Affairs of Pennsylvania, made conformably to an Act of Assembly approved the 16th day of February, 1833, I have hereunto set my Hand and caused the Seal of said Department to be affixed at Harrisburg, this First day of June, 1908.

Henry Hoover
Secretary of Internal Affairs.